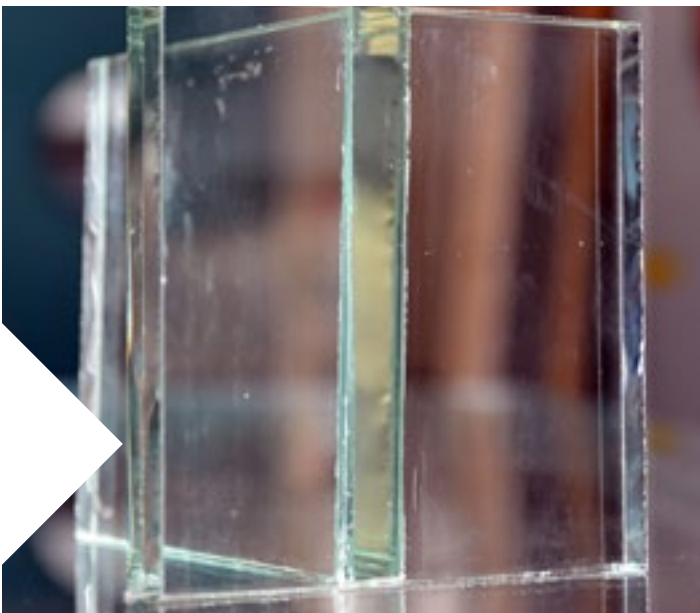




## Dow Performance Silicones

# DOWSIL™ 2400 Silicone Assembly Sealant

## Crystal Clear Bonding & Assembly



DOWSIL™ 2400 Silicone Assembly Sealant is a 100% hot applied silicone, optically clear. Due to its reactive hotmelt properties, it provides immediate strength once cooled down. It is suitable for residential and commercial assembly as well as for structural bonding and sealing applications and opens a wide field of potential applications.

### Technical Properties

Test method	Property	Result
ASTM D412	Durometer Shore A hardness	60
ASTM C719	Movement capability	± 50%
ASTM D412	Ultimate tensile strength	4,3 MPa

### Structural Bonding & Assembly

For exterior and interior structural bonding applications and specific structural glazing designs such as closed cavity facade or other glass-metal or glass-glass structures, where a crystal clear connection is desired.\* As a 1-part moisture curing silicone, joint depth is limited. It is UV, temperature and weather resistant, making it suitable for interior and exterior use. Available in cartridges for manual application for general assembly of glass designs and in pails for automated or semiautomated applications.

### Crystal Clear Glass Edge for Special Insulating Glass Designs

For crystal clear 2-sided insulating glass edge designs in conjunction with a crystal clear spacer. Designs need to be approved and calculated by the insulating glass manufacturer. DOWSIL™ 2400 Silicone Assembly Sealant is externally tested according to EN1279-4.

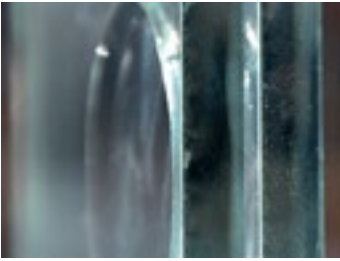
\* Only for specific structural glazing applications where design and load constraints allow bonding with a one-part silicone, whether the application is sealing, bonding or glass. Please consult your local Dow Services Engineer for possible technical limitations prior to use.

### Benefits

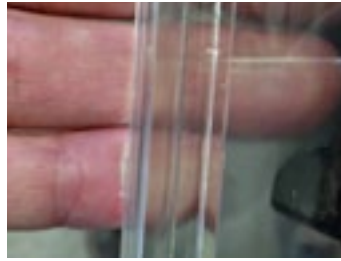
- Crystal clear aesthetics
- Glass-glass and glass-metal connections
- Structural bonding and sealing
- Enhanced productivity for automated bonding applications
- In-factory and on-site bonding

### Features

- UV and hot water resistant
- Optically clear – color stable
- High structural capability
- High movement capability
- Moisture curing 1-part silicone
- Window back-bedding



Structural Glass Bonding



Crystal Clear IG Edge



Crystal Clear Weather Sealing



Automated Assembly for Productivity Enhancements

## Other applications

- Weather sealing – glass-glass connections for increased transparency
- Bonding of glass fins
- Interior decorative bonding
- Manual assembly on-site
- Fully automated assembly of windows and doors enhancing productivity
- Window back-bedding

## Properties

- Crystal clear 100% silicone reactive hotmelt
- Moisture curing 1-part sealant
- Structural capability:  $\sigma_{DES} = 0,14$  MPa (dynamic)  
Deadload support required
- Applied at 120°C-130°C
- Available in pails and cartridges
- For manual, semi-automated and automated applications

## Quality Bond™

The high quality of crystal clear bonding is reinforced through the well established Quality Bond™ Program. Quality Bond™ lifts silicone sealing and bonding to the highest level through the instigation of standards of best practice in quality control, quality assurance and product application by specialist silicone fabricators and applicators. Quality Bond™ allows customers and specifiers to share in Dow's industry-leading expertise and benefit from our proven global performance track record. For more information, please visit [qualitybond.com](http://qualitybond.com).

Quality Bond™ is currently available in Europe, the Middle East, Africa, India, ASEAN and Greater China.

## Contact Us

Dow is collaborating with industry professionals around the world to develop solutions to improve the energy efficiency of buildings for a more comfortable environment. Learn more about Dow's full range of High Performance Building solutions by visiting us online at [consumer.dow.com/construction](http://consumer.dow.com/construction).

Dow has sales offices, manufacturing sites and science and technology laboratories around the globe. Find local contact information at [consumer.dow.com/ContactUs](http://consumer.dow.com/ContactUs).

## Visit us online:



Learn more about the full range of Dow High Performance Building Solutions, including service and support, at [consumer.dow.com/crystalclearbonding](http://consumer.dow.com/crystalclearbonding).

Images: dow\_40683055942, dow\_40683054879, dow\_40683055778, dow\_40683054127, dow\_40646054615

### HANDLING PRECAUTIONS

PRODUCT SAFETY INFORMATION REQUIRED FOR SAFE USE IS NOT INCLUDED IN THIS DOCUMENT. BEFORE HANDLING, READ PRODUCT AND SAFETY DATA SHEETS AND CONTAINER LABELS FOR SAFE USE, PHYSICAL AND HEALTH HAZARD INFORMATION. THE SAFETY DATA SHEET IS AVAILABLE ON THE DOW WEBSITE AT CONSUMER.DOW.COM, OR FROM YOUR DOW SALES APPLICATION ENGINEER, OR DISTRIBUTOR, OR BY CALLING DOW CUSTOMER SERVICE.

### LIMITED WARRANTY INFORMATION – PLEASE READ CAREFULLY

The information contained herein is offered in good faith and is believed to be accurate. However, because conditions and methods of use of our products are beyond our control, this information should not be used in substitution for customer's tests to ensure that our products are safe, effective and fully satisfactory for the intended end use. Suggestions of use shall not be taken as inducements to infringe any patent.

Dow's sole warranty is that our products will meet the sales specifications in effect at the time of shipment.

Your exclusive remedy for breach of such warranty is limited to refund of purchase price or replacement of any product shown to be other than as warranted.

**TO THE FULLEST EXTENT PERMITTED BY APPLICABLE LAW, DOW SPECIFICALLY DISCLAIMS ANY OTHER EXPRESS OR IMPLIED WARRANTY OF FITNESS FOR A PARTICULAR PURPOSE OR MERCHANTABILITY.**

**DOW DISCLAIMS LIABILITY FOR ANY INCIDENTAL OR CONSEQUENTIAL DAMAGES.**

®™ Trademark of The Dow Chemical Company ("Dow") or an affiliated company of Dow

© 2018 The Dow Chemical Company. All rights reserved.

30023848

Form No. 62-1844-01 C