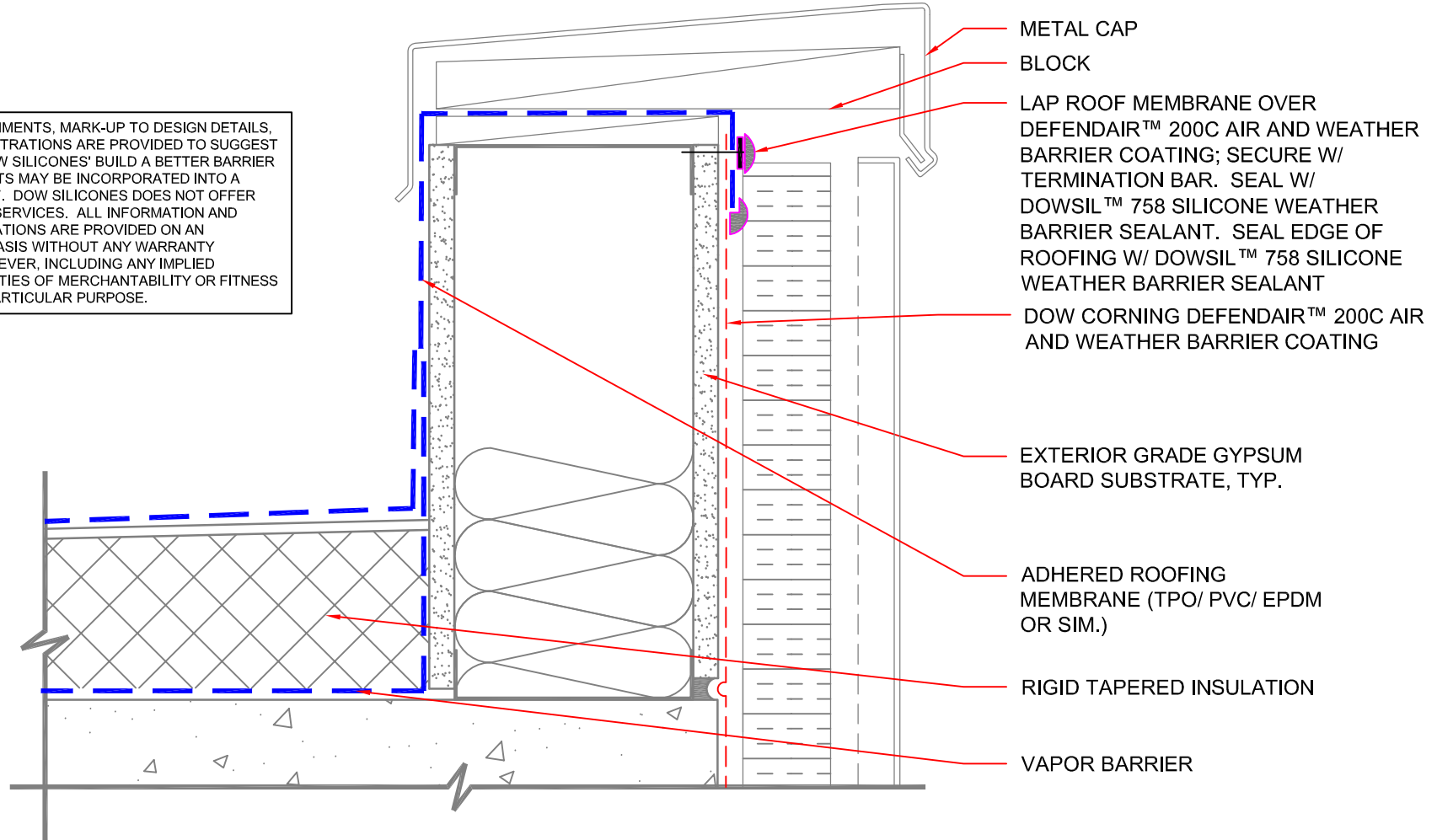


ANY COMMENTS, MARK-UP TO DESIGN DETAILS, OR ILLUSTRATIONS ARE PROVIDED TO SUGGEST HOW DOW SILICONES' BUILD A BETTER BARRIER PRODUCTS MAY BE INCORPORATED INTO A PROJECT. DOW SILICONES DOES NOT OFFER DESIGN SERVICES. ALL INFORMATION AND ILLUSTRATIONS ARE PROVIDED ON AN "AS-IS" BASIS WITHOUT ANY WARRANTY WHATSOEVER, INCLUDING ANY IMPLIED WARRANTIES OF MERCHANTABILITY OR FITNESS FOR A PARTICULAR PURPOSE.



- METAL CAP
- BLOCK
- LAP ROOF MEMBRANE OVER DEFENDAIR™ 200C AIR AND WEATHER BARRIER COATING; SECURE W/ TERMINATION BAR. SEAL W/ DOWSIL™ 758 SILICONE WEATHER BARRIER SEALANT. SEAL EDGE OF ROOFING W/ DOWSIL™ 758 SILICONE WEATHER BARRIER SEALANT
- DOW CORNING DEFENDAIR™ 200C AIR AND WEATHER BARRIER COATING
- EXTERIOR GRADE GYPSUM BOARD SUBSTRATE, TYP.
- ADHERED ROOFING MEMBRANE (TPO/ PVC/ EPDM OR SIM.)
- RIGID TAPERED INSULATION
- VAPOR BARRIER

01 DETAIL SECTION: PARAPET SHEET ROOF'G MEMB. (NON-ADHERED) INSTALLED AFTER DEFENDAIR™ 200C AIR AND WEATHER BARRIER COATING

SCALE: 3"=1'-0"

61-8133-01 A



DOWSIL™ AIR AND WEATHER BARRIER SYSTEMS

DRAWING NO.	03C OPTION 3
DATE	11/1/2019