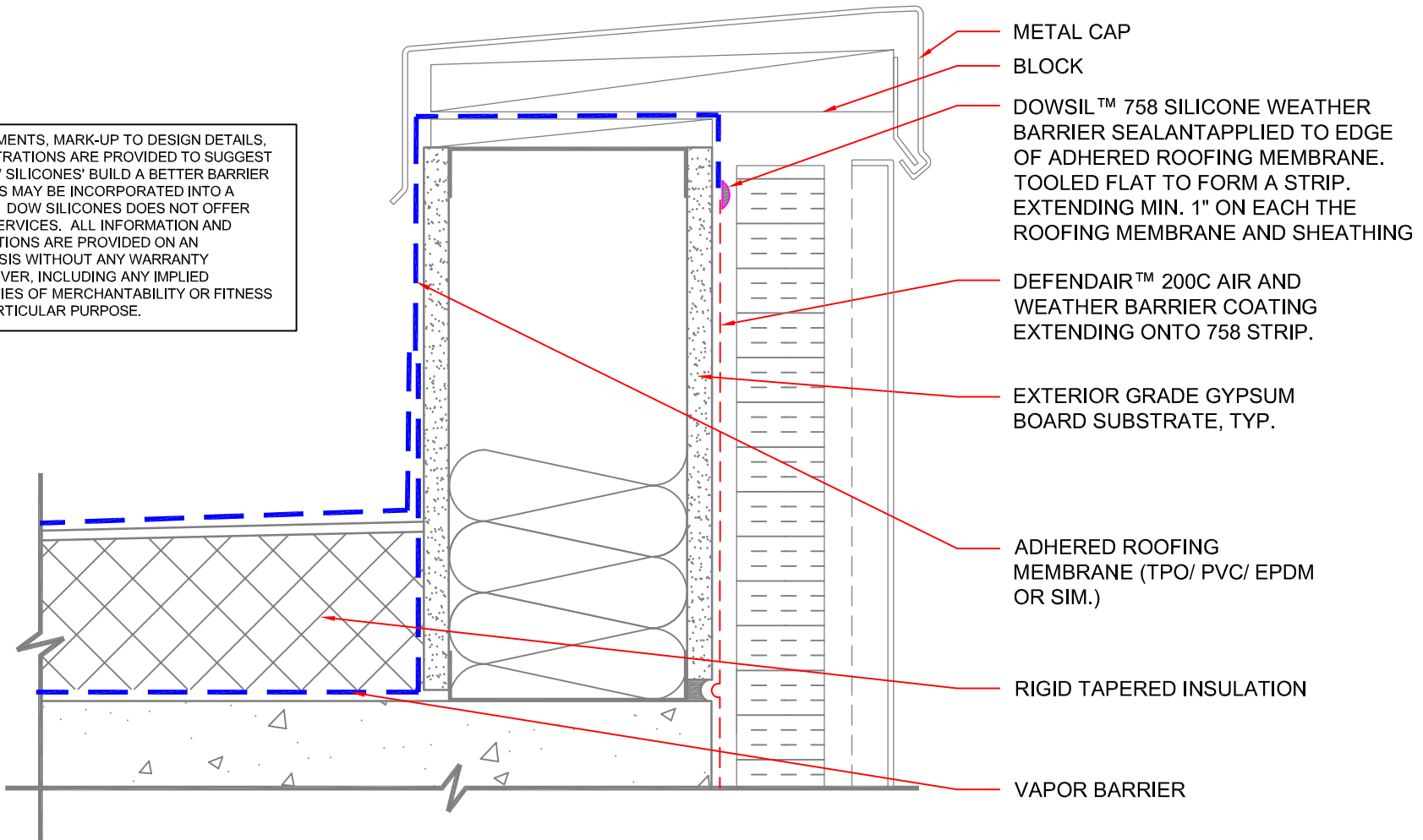


ANY COMMENTS, MARK-UP TO DESIGN DETAILS, OR ILLUSTRATIONS ARE PROVIDED TO SUGGEST HOW DOW SILICONES' BUILD A BETTER BARRIER PRODUCTS MAY BE INCORPORATED INTO A PROJECT. DOW SILICONES DOES NOT OFFER DESIGN SERVICES. ALL INFORMATION AND ILLUSTRATIONS ARE PROVIDED ON AN "AS-IS" BASIS WITHOUT ANY WARRANTY WHATSOEVER, INCLUDING ANY IMPLIED WARRANTIES OF MERCHANTABILITY OR FITNESS FOR A PARTICULAR PURPOSE.



- METAL CAP BLOCK
- DOWSIL™ 758 SILICONE WEATHER BARRIER SEALANT APPLIED TO EDGE OF ADHERED ROOFING MEMBRANE. TOOLED FLAT TO FORM A STRIP. EXTENDING MIN. 1" ON EACH THE ROOFING MEMBRANE AND SHEATHING
- DEFENDAIR™ 200C AIR AND WEATHER BARRIER COATING EXTENDING ONTO 758 STRIP.
- EXTERIOR GRADE GYPSUM BOARD SUBSTRATE, TYP.
- ADHERED ROOFING MEMBRANE (TPO/ PVC/ EPDM OR SIM.)
- RIGID TAPERED INSULATION
- VAPOR BARRIER

01

DETAIL SECTION: PARAPET ADHERED ROOFING INSTALLED BEFORE DEFENDAIR™ 200C AIR AND WEATHER BARRIER COATING

SCALE: 3"=1'-0"

61-8131-01 A



DOWSIL™ AIR AND WEATHER BARRIER SYSTEMS

DRAWING NO.	03C OPTION 1
DATE	11/1/2019