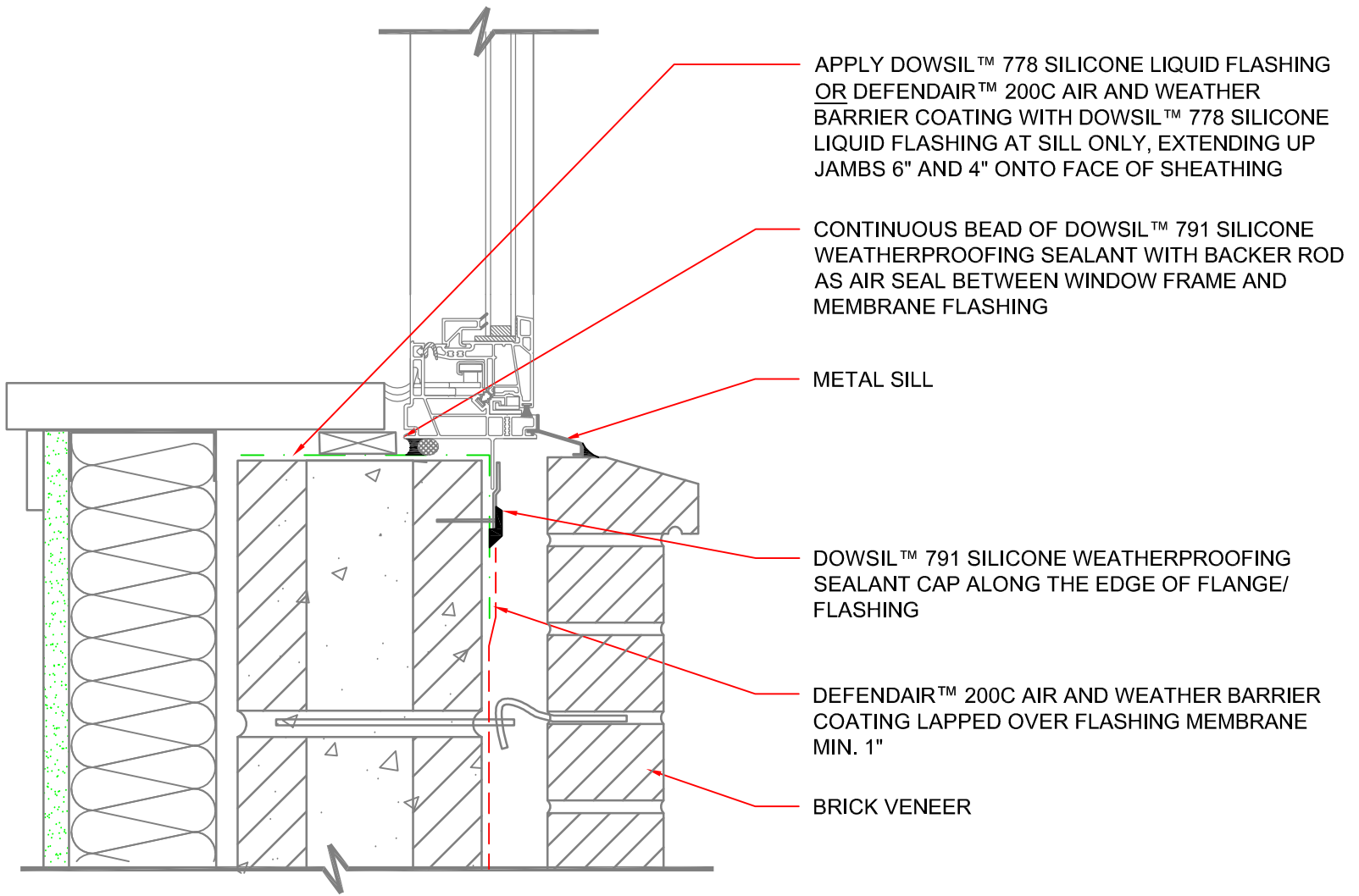


ANY COMMENTS, MARK-UP TO DESIGN DETAILS, OR ILLUSTRATIONS ARE PROVIDED TO SUGGEST HOW DOW SILICONES' BUILD A BETTER BARRIER PRODUCTS MAY BE INCORPORATED INTO A PROJECT. DOW SILICONES DOES NOT OFFER DESIGN SERVICES. ALL INFORMATION AND ILLUSTRATIONS ARE PROVIDED ON AN "AS-IS" BASIS WITHOUT ANY WARRANTY WHATSOEVER, INCLUDING ANY IMPLIED WARRANTIES OF MERCHANTABILITY OR FITNESS FOR A PARTICULAR PURPOSE.



APPLY DOWSIL™ 778 SILICONE LIQUID FLASHING OR DEFENDAIR™ 200C AIR AND WEATHER BARRIER COATING WITH DOWSIL™ 778 SILICONE LIQUID FLASHING AT SILL ONLY, EXTENDING UP JAMBS 6" AND 4" ONTO FACE OF SHEATHING

CONTINUOUS BEAD OF DOWSIL™ 791 SILICONE WEATHERPROOFING SEALANT WITH BACKER ROD AS AIR SEAL BETWEEN WINDOW FRAME AND MEMBRANE FLASHING

METAL SILL

DOWSIL™ 791 SILICONE WEATHERPROOFING SEALANT CAP ALONG THE EDGE OF FLANGE/ FLASHING

DEFENDAIR™ 200C AIR AND WEATHER BARRIER COATING LAPPED OVER FLASHING MEMBRANE MIN. 1"

BRICK VENEER

117 **DETAIL SECTION:**
SILL: FLANGE WINDOW AT BRICK W/ CMU WALL
SCALE: 3"=1'-0"

61-8104-01 C



DOWSIL™ AIR AND WEATHER BARRIER SYSTEMS

DRAWING NO.
DATE

117

11/1/2019