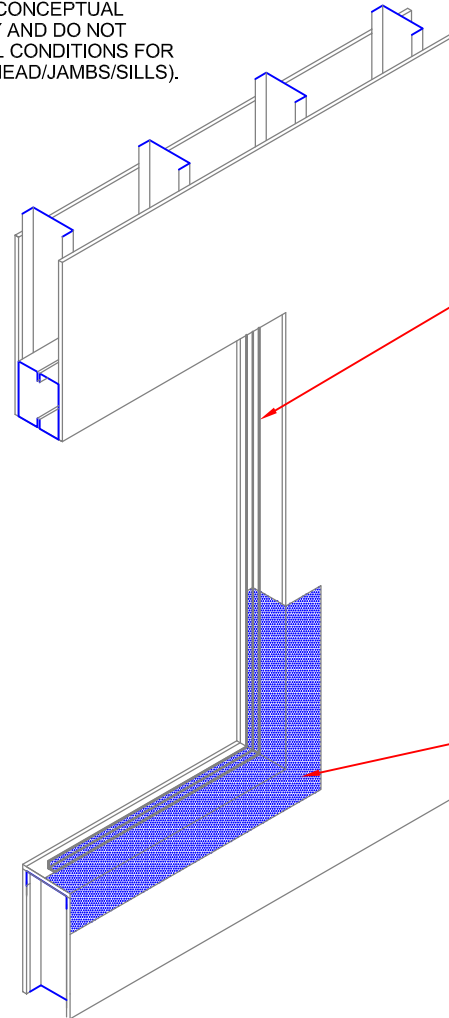


NOTE(S):
 REFER TO WINDOW HEAD, SILL AND JAMB DETAILS.
 SEQUENCE DRAWINGS INDICATE CONCEPTUAL
 INSTALLATION OF FLASHING ONLY AND DO NOT
 PURPORT TO ILLUSTRATE ACTUAL CONDITIONS FOR
 THE INTERIOR WINDOW WRAPS (HEAD/JAMBS/SILLS).



DOWSIL™ 778 SILICONE LIQUID
 ISOMETRIC WINDOW FLASHING
 SEQUENCING 'A'

WHERE METAL BACK ANGLE IS TO BE
 USED, INSTALL PRIOR TO
 APPLICATION OF
 DOWSIL™ WEATHERPROOFING
 PRODUCTS

TROWEL APPLY DOWSIL™ 778
 SILICONE LIQUID FLASHING OVER
 SILL AND UP BACK ANGLE PER MFR'S
 INSTRUCTIONS. (WHERE BACK
 ANGLE IS NOT USED, APPLY
 DOWSIL™ 791 SILICONE
 WEATHERPROOFING SEALANT
 FULLY INTO OPENING)

APPLY SEALANT UP JAMBS 6" AND
 EXTEND 4" ONTO FACE OF
 SHEATHING

ANY COMMENTS, MARK-UP TO DESIGN DETAILS,
 OR ILLUSTRATIONS ARE PROVIDED TO
 SUGGEST HOW DOW SILICONES' BUILD A
 BETTER BARRIER PRODUCTS MAY BE
 INCORPORATED INTO A PROJECT. DOW
 SILICONES DOES NOT OFFER DESIGN
 SERVICES. ALL INFORMATION AND
 ILLUSTRATIONS ARE PROVIDED ON AN
 "AS-IS" BASIS WITHOUT ANY WARRANTY
 WHATSOEVER, INCLUDING ANY IMPLIED
 WARRANTIES OF MERCHANTABILITY OR
 FITNESS FOR A PARTICULAR PURPOSE.

61-8077-01 A



DOWSIL™ AIR AND WEATHER BARRIER SYSTEMS

DRAWING NO.

120

DATE

11/1/2019