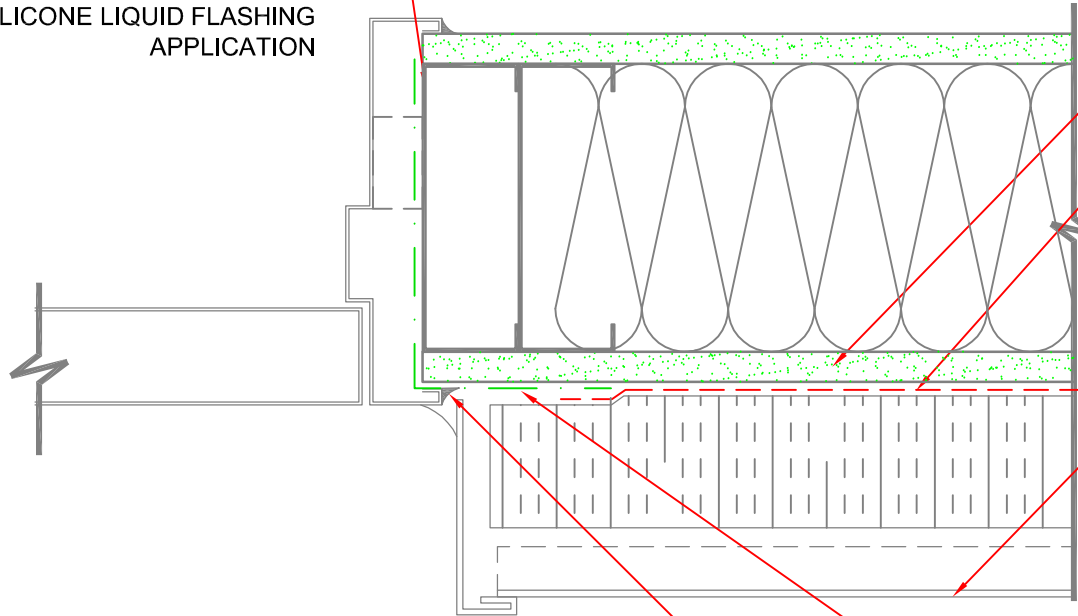


STL. STUD SLOT OPENINGS TO BE COVERED WITH DOWSIL™ SILICONE TRANSITION STRIP (STS) AND DOWSIL™ 791 SILICONE WEATHERPROOFING SEALANT PRIOR TO DOWSIL™ 778 SILICONE LIQUID FLASHING APPLICATION

DETAIL ASSUMES DOOR IS INSTALLED AFTER THE WALL & AIR BARRIER SYSTEM



PROVIDE FINISHED GWB EDGE

DEFENDAIR™ 200C AIR AND WEATHER BARRIER COATING LAPPED OVER FLASHING MEMBRANE MIN. 1"

EXTERIOR CLADDING ASSEMBLY BY OTHER

APPLY DOWSIL™ 778 SILICONE LIQUID FLASHING OR DEFENDAIR™ 200C AIR AND WEATHER BARRIER COATING WITH DOWSIL™ 778 SILICONE LIQUID FLASHING AT SILL ONLY, EXTENDING UP JAMBS 6" AND 4" ONTO FACE OF SHEATHING

CONTINUOUS BEAD OF DOWSIL™ 791 SILICONE WEATHERPROOFING SEALANT AS AIR SEAL BETWEEN DOOR FRAME AND MEMBRANE FLASHING

ANY COMMENTS, MARK-UP TO DESIGN DETAILS, OR ILLUSTRATIONS ARE PROVIDED TO SUGGEST HOW DOW SILICONES' BUILD A BETTER BARRIER PRODUCTS MAY BE INCORPORATED INTO A PROJECT. DOW SILICONES DOES NOT OFFER DESIGN SERVICES. ALL INFORMATION AND ILLUSTRATIONS ARE PROVIDED ON AN "AS-IS" BASIS WITHOUT ANY WARRANTY WHATSOEVER, INCLUDING ANY IMPLIED WARRANTIES OF MERCHANTABILITY OR FITNESS FOR A PARTICULAR PURPOSE.

01 **DETAIL PLAN:**
HOLLOW METAL DOOR AT MTL. STUD WALL
SCALE: 3"=1'-0"

61-8055-01 D



DOWSIL™ AIR AND WEATHER BARRIER SYSTEMS

DRAWING NO.	31
DATE	11/1/2019