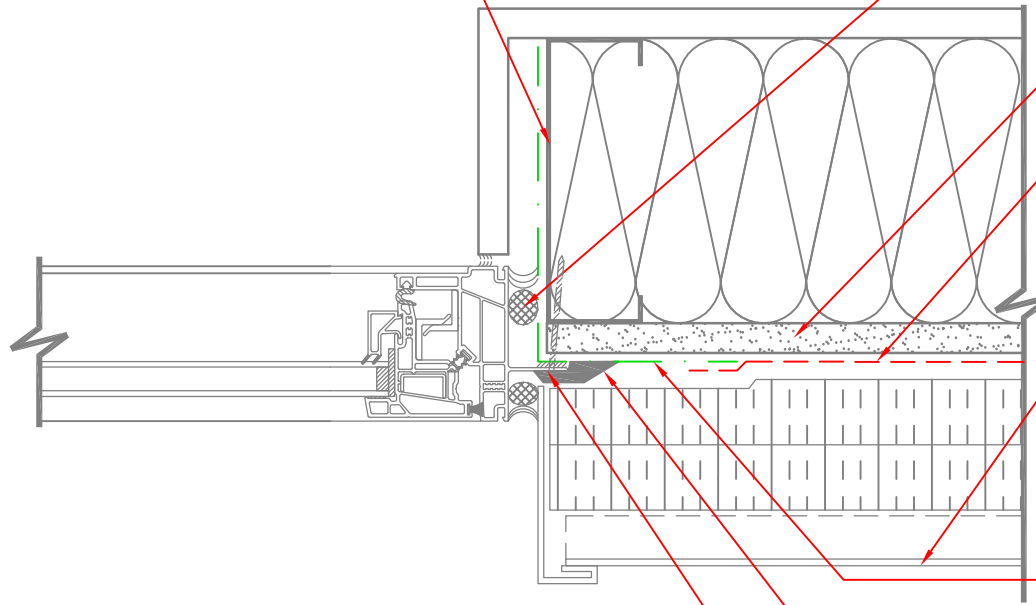


STUD SLOT OPENINGS TO BE COVERED WITH DOWSIL™ SILICONE TRANSITION STRIP (STS) AND DOWSIL™ 791 SILICONE WEATHERPROOFING SEALANT PRIOR TO DOWSIL™ 778 SILICONE LIQUID FLASHING APPLICATION



CONTINUOUS BEAD OF DOWSIL™ 791 SILICONE WEATHERPROOFING SEALANT WITH BACKER ROD AS AIR SEAL BETWEEN WINDOW FRAME AND MEMBRANE FLASHING

PROVIDE FINISHED GWB EDGE

DEFENDAIR™ 200C AIR AND WEATHER BARRIER COATING LAPPED OVER FLASHING MEMBRANE MIN. 1"

EXTERIOR CLADDING ASSEMBLY BY OTHER

APPLY DOWSIL™ 778 SILICONE LIQUID FLASHING OR DEFENDAIR™ 200C AIR AND WEATHER BARRIER COATING WITH DOWSIL™ 778 SILICONE LIQUID FLASHING AT SILL ONLY, EXTENDING UP JAMBS 6" AND 4" ONTO FACE OF SHEATHING

DOWSIL™ 791 SILICONE WEATHERPROOFING SEALANT CAP ALONG THE EDGE OF FLANGE/ FLASHING.

NAIL FLANGE SET IN DOWSIL™ 791 SILICONE WEATHERPROOFING SEALANT

ANY COMMENTS, MARK-UP TO DESIGN DETAILS, OR ILLUSTRATIONS ARE PROVIDED TO SUGGEST HOW DOW SILICONES' BUILD A BETTER BARRIER PRODUCTS MAY BE INCORPORATED INTO A PROJECT. DOW SILICONES DOES NOT OFFER DESIGN SERVICES. ALL INFORMATION AND ILLUSTRATIONS ARE PROVIDED ON AN "AS-IS" BASIS WITHOUT ANY WARRANTY WHATSOEVER, INCLUDING ANY IMPLIED WARRANTIES OF MERCHANTABILITY OR FITNESS FOR A PARTICULAR PURPOSE.

01 **DETAIL PLAN; WINDOW JAMB - FLANGED WINDOW AT MTL. STUD WALL**
SCALE: 3"=1'-0"

61-8045-01 E



DOWSIL™ AIR AND WEATHER BARRIER SYSTEMS

DRAWING NO.
DATE

18

11/1/2019