



## DOWSIL™ EP-9215 Cosmetic Powder

INCI NAME: Dimethicone/Vinyl Dimethicone Crosspolymer

### Features & Benefits

- White elastomeric silicone powder
- High elastomer hardness
- Silky and powdery skin feel
- Fluid/oil absorption capabilities
- Sebum absorption for medium to dry skin

### Composition

- Silicone elastomer powder

### Applications

- Color cosmetic loose-,pressed- powders (eye shadow, make-up)
- Color cosmetic: liquid and stick foundations
- Face and body creams, lotions and gels
- Many other potential applications (example: lipsticks, blush, eye concealer)

### Typical Properties

Specification Writers: These values are not intended for use in preparing specifications.

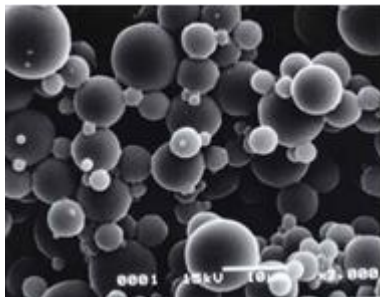
Property	Unit	Result
Appearance		White powder
Average particle size	µm	2–7
Cyclotetrasiloxane (D4) content	%	< 0.1
Cyclopentasiloxane (D5) content	%	< 0.1

### Description

DOWSIL™ EP-9215 Cosmetic Powder is a white cross-linked Dimethyl Polysiloxane Elastomer Powder.

The elastomer hardness of DOWSIL™ EP-9215 Cosmetic Powder is higher than DOWSIL™ 9506 Powder and DOWSIL™ 9701 Cosmetic Powder. This unique property allows different fluid/oil absorption capabilities together with a sebum absorption profile for medium to dry skin.

## Description (Cont.)



**Figure 1:** M.E.M picture of DOWSIL™ EP-9215 Cosmetic Powder.

## How to Use

DOWSIL™ EP-9215 Cosmetic Powder can be added directly to the oil phase ingredients without premixing in another fluid.

For powdery type formulations, DOWSIL™ EP-9215 Cosmetic Powder can be grinded directly with the other powders.

## Handling Precautions

PRODUCT SAFETY INFORMATION REQUIRED FOR SAFE USE IS NOT INCLUDED IN THIS DOCUMENT. BEFORE HANDLING, READ PRODUCT AND SAFETY DATA SHEETS AND CONTAINER LABELS FOR SAFE USE, PHYSICAL AND HEALTH HAZARD INFORMATION. THE SAFETY DATA SHEET IS AVAILABLE ON THE DOW WEBSITE AT CONSUMER.DOW.COM, OR FROM YOUR DOW SALES APPLICATION ENGINEER, OR DISTRIBUTOR, OR BY CALLING DOW CUSTOMER SERVICE.

WARNING: DOWSIL™ EP-9215 Cosmetic Powder is a fine powder and needs to be handled with certain precautions. Avoid dust accumulation. Eliminate sources of ignition. Product can build up static electricity which may be discharged as a spark. If this product is added to a solvent, precautionary measures need to be taken to eliminate sparks.

## Usable Life and Storage

When stored at or below 32°C (90°F) in the original unopened containers, this product has a usable life of 27 months from the date of production.

## Packaging Information

This product is available in 10 kg bags.

Samples of 200 g are available in carton boxes.

## Limitations

This product is neither tested nor represented as suitable for medical or pharmaceutical uses.

## Health and Environmental Information

To support customers in their product safety needs, Dow has an extensive Product Stewardship organization and a team of product safety and regulatory compliance specialists available in each area.

For further information, please see our website, [consumer.dow.com](http://consumer.dow.com) or consult your local Dow representative.

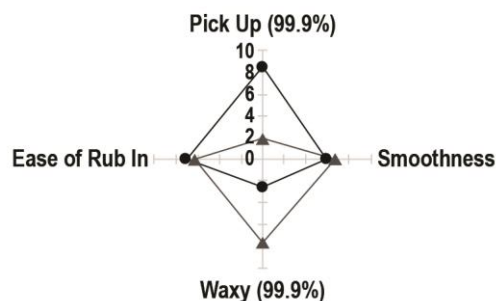
**Table 1:** Pressed powder formulation CPF 1104.

Ingredients	INCI name	Control	1
		(%)	(%)
<b>Phase A</b>			
DOWSIL™ EP-9215 Cosmetic Powder	Dimethicone/Vinyl Dimethicone Crosspolymer		5.00
Barium Sulfate HL	Barium Sulfate	6.00	6.00
Zinc Stearate	Zinc Stearate	0.20	0.20
Talc Luzenac Pharma M	Talc	67.60	62.60
Magnesium Hydroxide Carbonate Heavy	Magnesium Hydroxide carbonate	1.20	1.20
Unipure White LC 981	Titanium Dioxide	1.80	1.80
Propylparaben	Propylparaben	0.20	0.20
<b>Phase B</b>			
Unipure Brown LC 887	Iron oxides	15.00	15.00
<b>Phase C</b>			
MOD	Octyldodecyl Myristate	2.00	2.00
Labrafil Isostearic	Triisostearin PEG 6 Esters	1.00	1.00
Stearic Acid TP 18/55	Stearic acid	2.00	2.00
DOWSIL™ 9041 Silicone Elastomer Blend	Dimethicone (and) Dimethicone Crosspolymer	3.00	3.00

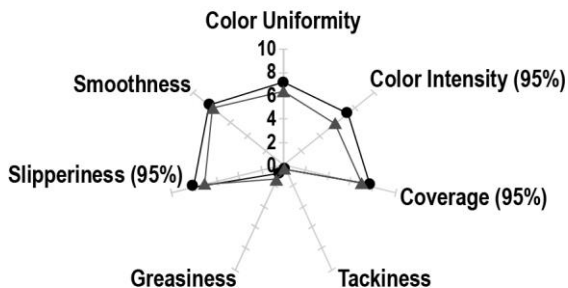
**Procedure:**

1. Mix phase A ingredients together with a coffee grinder
2. Add phase B ingredients to phase A and mix with a coffee grinder
3. Mix phase C ingredients together and add them to the mixture (A/B), mixing well with the coffee grinder until homogeneous.
4. The formulation can then be compacted at 1 ton for 15 seconds

**Evaluation in the Packaging**



**Evaluation During Skin Rubbing**



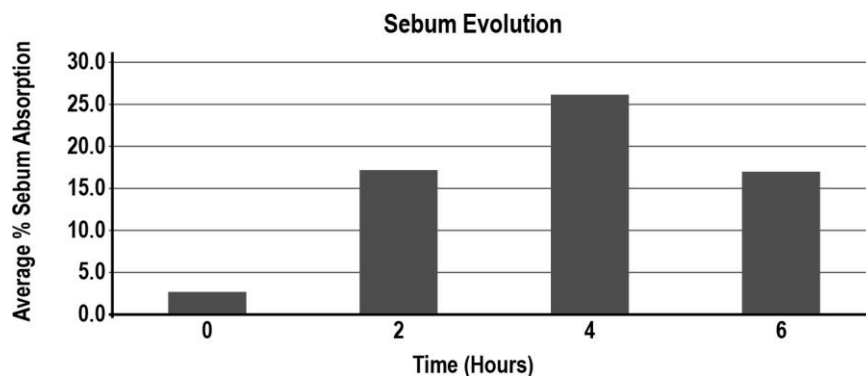
● DOWSIL™ EP-9215 Cosmetic Powder  
▲ Control

● DOWSIL™ EP-9215 Cosmetic Powder  
▲ Control

**Figure 1 & 2:** Multiple parameters paired comparison of pressed powder (cpf 1104) vs. the control.

**Table 2:** Absorption properties of DOWSIL™ EP-9215 Cosmetic Powder.

Ingredients	Absorption result (g fluid/1 g powder)
<b>Esters</b>	
Octyl Palmitate	0.50
Isopropyl Myristate	0.80
<b>Oils</b>	
Mineral Oil	0.60
Castor Oil	0.60
Sunflower Oil	0.50
<b>Synthetic Oils</b>	
Isododecane	1.50
<b>Silicones</b>	
DOWSIL™ 5562 Carbinol Fluid	0.40
XIAMETER™ PMX-0245 Cyclopentasiloxane	1.60
<b>Solvents</b>	
Water	0.50
Ethanol	0.40



**Figure 3:** Sebum absorption of a hydrogel containing 2% DOWSIL™ EP-9215 Cosmetic Powder.

- Sebumeter SM 810

**Summary of Benefits:**

Color Code:	XXX = Key Function, Benefit			XX = Secondary Function, Benefit			X = Some Benefit	
Powder Ref.	Optical Effects	Textures & Sensory	Compaction Aid	Powder Flow	Thickening & Gelling	Oil, Sebum Absorbency	Opacifying & Coverage	Other Benefits and Specifics
DOWSIL™ 9506 Powder		XXX			X	XX		
DOWSIL™ 9701 Cosmetic Powder		XX		XXX	X	XX	X	Some wrinkle masking
DOWSIL™ EP-9215 Cosmetic Powder		XXX		X		XX	X	

consumer.dow.com

**LIMITED WARRANTY INFORMATION – PLEASE READ CAREFULLY**

The information contained herein is offered in good faith and is believed to be accurate. However, because conditions and methods of use of our products are beyond our control, this information should not be used in substitution for customer’s tests to ensure that our products are safe, effective, and fully satisfactory for the intended end use. Suggestions of use shall not be taken as inducements to infringe any patent.

Dow’s sole warranty is that our products will meet the sales specifications in effect at the time of shipment.

Your exclusive remedy for breach of such warranty is limited to refund of purchase price or replacement of any product shown to be other than as warranted.

**TO THE FULLEST EXTENT PERMITTED BY APPLICABLE LAW, DOW SPECIFICALLY DISCLAIMS ANY OTHER EXPRESS OR IMPLIED WARRANTY OF FITNESS FOR A PARTICULAR PURPOSE OR MERCHANTABILITY.**

**DOW DISCLAIMS LIABILITY FOR ANY INCIDENTAL OR CONSEQUENTIAL DAMAGES.**

