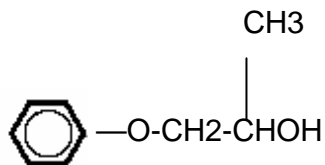




Product Name DOWANOL™ PPh Glycol Ether

Synonyms Propylene glycol phenyl ether.

Chemical Formula



Product Description

DOWANOL™ PPh glycol ether is a slow-evaporating, very hydrophobic glycol ether ideal in coalescing and carrier solvent applications. DOWANOL™ PPh glycol ether is a slow evaporating, very hydrophobic glycol ether — more hydrophobic than would be expected based simply on its molecular weight. This product has low odor. With its aromatic structure, DOWANOL™ PPh glycol ether is an excellent match for phenolic coatings and linings; it is also an excellent coalescent for acrylic-based latexes. DOWANOL™ PPh glycol ether is also used extensively in dyeing applications, where it can function as both a dye solubilizer and as a dye carrier. DOWANOL™ PPh has superior viscosity reduction properties in metalworking fluids.

Applications

- Latex coalescent in water-based architectural and industrial coatings.
- Carrier solvent for textile dyes.
- Solvent for inks in ball point and felt tip pens, stamp pads, and textile printing pastes.
- Paint removers.
- Coalescent for latex adhesives.
- Useful in the formulation of homogeneous, stable metalworking fluids.

Typical Physical Properties

Property	Value
Molecular Weight (g/mol)	152.2
Boiling Point @ 760 mmHg, 1.01 ar	241.2 °C (466 °F)
Flash Point (Setaflash Closed Cup)	115 °C (239°F)
Freezing Point	11 °C (51.8°F)
Vapor pressure@ 20°C — extrapolated	<0.01 mmHg 0.01 hPa
Specific gravity (25/25°C)	1.060
Liquid Density @ 20°C	1.06 g/cm3
Vapor Density (air = 1)	5.27
Viscosity (cP or mPa·s @ 20°C)	34 (22.7 @ 25°C)
Surface tension (dynes/cm or mN/m @ 20°C)	38.1
Specific heat (J/g°C @ 25°C)	2.18
Heat of vaporization (J/g) at normal boiling point	319
Net heat of combustion (kJ/g) — predicted @ 25°C	30.4

Autoignition temperature	480 °C (896 °F)
Evaporation rate (n-butyl acetate = 1.0)	< 0.01
Solubility, g/L or % @ 20°C	
Solvent in water	15.1 g/L
Hansen solubility parameters	
(J/cm ³) ^{1/2}	
δ_d (Dispersion)	17.4
δ_p (Polar)	5.3
δ_h (Hydrogen bonding)	11.5
Partition Coefficient, n-octanol/water (log Pow)	1.41
Flammable limits (vol.% in air)	
Lower	0.8
Upper	---

Typical Physical Properties:

This data provided for those properties are typical values, and should not be construed as sales specifications.

Classification/Registry
Numbers/Country
Inventory@.

CAS#	770-35-4
AICS (Australia)	770-35-4
DSL (Canada)	770-35-4
IECSC (China)	770-35-4
ECI (Korea)	770-35-4/KE-28261
EINECS (EU)	212-222-7
MITI (Japan)	SJE070078
ENCS/HSL (Japan)	7-78
NZIoC (New Zealand)	770-35-4/HSR003522
PICCS (Philippines)	770-35-4
TSCA (U.S.)	770-35-4

@NOTE: Classifications apply only to this glycol ether product. It is the responsibility of the formulator to ensure that the final finished product complies with the regulations of a given country prior to its sale or distribution in that country.

How Supplied

REGION	PACKAGING	TRANSPORT MODE
Europe/Africa	Bulk/Drum	Tank Truck
Latin America	Bulk/Drum	Tank Truck
North America	Bulk/Drum	Tank Truck/Tank Car
Pacific	Bulk/Drum	Tank Truck

Product Stewardship

Dow encourages its customers and potential users to review their applications from the standpoint of human health and environmental aspects. To help ensure that Dow products are not used in ways for which they are not intended or tested, Dow personnel will assist customers in dealing with environmental and product safety considerations. Dow literature, including Material Safety Data Sheets, should be consulted prior to the use.



For More Information

North America:

Toll-free 1-800-447-4369

Europe:

Toll-free (+800) 3-694-6367

(+31) 11567-2626

Asia-Pacific:

Toll-free (+800) 7776-7776

(+60) 3-7958-3392

Latin America:

(+55) 11-5188-9222

* International toll free from Austria, Belgium, Denmark,

Finland (prefix 990), France, Germany, Hungary,

Ireland, The Netherlands, Norway, Portugal, Spain,

Sweden, Switzerland, and the United Kingdom

www.dow.com

NOTICE: No freedom from any patent owned by Seller or others is to be inferred. Because use conditions and applicable laws may differ from one location to another and may change with time, Customer is responsible for determining whether products and the information in this document are appropriate for Customer's use and for ensuring that Customer's workplace and disposal practices are in compliance with applicable laws and other government enactments. Seller assumes no obligation or liability for the information in this document. References to "Dow" or "Company" mean The Dow Chemical Company and its consolidated subsidiaries unless otherwise expressly noted. NO WARRANTIES ARE GIVEN; ALL IMPLIED WARRANTIES OF MERCHANTABILITY OR FITNESS FOR A PARTICULAR PURPOSE ARE EXPRESSLY EXCLUDED.

