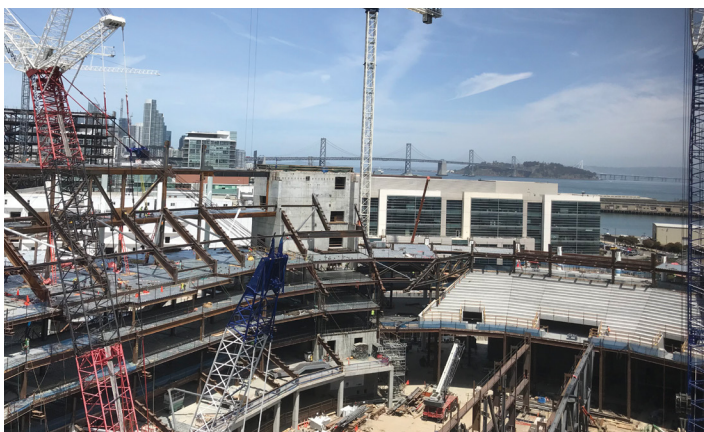


## CASE STUDY

# Dow products, services help keep Chase Center project on schedule

Chase Center, San Francisco, California, United States



In 2019, the Golden State Warriors – San Francisco's National Basketball Association (NBA) team – moved into their new home, the Chase Center. In addition to the arena, this premier facility includes a variety of mixed-use office and retail space and features distinctive architecture that makes a strong visual impact in the Mission Bay community.

## The project

The Chase Center development is centered on an 18,000-seat multipurpose arena, but the total project is much larger. The full façade totals more than 700,000 square feet – half of which is on the arena itself. Designed by MANICA Architecture and Kendall Heaton Associates, the construction was managed by general contractor team Mortenson | Clark, a joint venture.

## The challenge

Typical of many of today's large projects, the Chase Center complex had an aggressive build schedule. The facility needed to acquire a temporary certificate of occupancy by August 1, 2019, to accommodate prescheduled high-profile events in advance of the October start of the NBA season.

Adding to planning and construction challenges was the goal of achieving LEED Gold certification, requiring careful consideration of sustainable design and performance-driven details and construction.

The Chase Center arena project specification called for a demonstrated-successful air barrier system that needed to be installed within a tight timeline. The selected air barrier system needed to perform in the unique climate of the San Francisco Peninsula, so the Chase Center construction team approached Dow about its distinctive silicone air barrier system and demonstrated technical support.

### Location

San Francisco, California, USA

### Products

- **Two-sided structural glazing**  
DOWSIL™ 121 Structural Glazing Sealant  
DOWSIL™ 983 Structural Glazing Sealant  
DOWSIL™ 795 Silicone Building Sealant
- **Weatherproofing products**  
DOWSIL™ Silicone Transition Strip  
DOWSIL™ 791 Silicone Weatherproofing Sealant
- **Air-weather barrier system**  
DEFENDAIR™ 200 Silicone Liquid-Applied Air and Weather Barrier  
DOWSIL™ 778 Silicone Liquid Flashing  
DOWSIL™ 791 Silicone Weatherproofing Sealant  
DOWSIL™ 758 Silicone Weather Barrier Sealant

### Key participants

- **Building owner**  
Golden State Warriors
- **Architect**  
Kendall Heaton Associates/MANICA Architecture
- **Weatherproofing contractor**  
Coast Building Products  
Valley Waterproofing
- **Field glazing contractor**  
Enclos Corporation
- **Curtainwall contractor**  
Enclos Corporation
- **General contractor**  
Mortenson | Clark, a joint venture
- **Building enclosure consultants**  
Walter P Moore  
Morrison Hershfield

## The answers

The project team, under the leadership of Mortenson | Clark, found what they were seeking in materials and support from Dow. DOWSIL™ Brand Performance Products – with exceptional technical support – were an excellent choice for the challenges at the Chase Center development.



### Air barrier

With the project schedule being extremely tight, time pressures were mounting. Confident that the DOWSIL™ Silicone Air Barrier System would succeed in the damp climate conditions faced by the arena, Dow expedited material to the mockup to undergo rigorous testing. Following the performance mockup, the DOWSIL™ Silicone Air Barrier System was selected, as it was able to offer the flexibility and robustness the construction team needed. Upon receiving the project details, Dow Building Science Application Engineer Frank Zhong developed job-specific details to enable the team to begin work immediately. Quality and validation reviews at the early stages of field installation were implemented and were part of the process throughout the duration of construction. The experienced technical sales and support team from Dow made every effort to help ensure success.

“We let them know that Dow would be with them every step of the way,” said Dow Senior Account Manager Anthony Torreano. “Our team did whatever it took to address the project needs.”

Collaborating with the general contractor, building consultants and applicators to help ensure proper application and performance of the system, Dow leveraged additional technical knowledge on the West Coast to offer options to overcome construction challenges. Pacific Northwest-based Dow Senior Technical Engineer Stanley Yee – who was part of the DOWSIL™ Silicone Air Barrier System commercialization effort – joined the team to offer application guidance on the complex project conditions. Led by Zhong, the Dow team utilized its commercial and technical knowledge and experience to work across the numerous channels of the joint-venture project to offer the timely, accurate information necessary to keep the project on its tight, demanding schedule.

To help ensure product was onsite for the applicators when needed, Dow leveraged expedited logistics to air-freight product deliveries and offered custom repackaging to accelerate material application.

“Tony Torreano and the Dow team were great to work with. Having them a phone call away for any questions and technical assistance was the support we needed for a project like this,” said Coast Building Products Project Manager Vicente Gutierrez. “The DOWSIL™ Silicone Air Barrier System was easy to understand in our application process and allowed us to stay on schedule.”

The DOWSIL™ Silicone Air Barrier System, featuring DEFENDAIR™ 200 Silicone Liquid-Applied Air and Weather Barrier, was applied to 212,084 square feet of the arena. Using compatible weathersealing components – including DOWSIL™ 778 Silicone Liquid Flashing, DOWSIL™ 758 Silicone Weather Barrier Sealant and DOWSIL™ Silicone Transition Strips – applicators were able to help ensure an easily tied-together weatherproofing option for the whole building.







## Façade

In addition to weatherproofing, DOWSIL™ Brand Products were counted on for their demonstrated structural capabilities. The façade design features special geometries and a total of 40,000 square feet of curtainwall on architecturally exposed structural steel (AESS).

Based on previous experience with Dow, representatives from façade engineering and curtainwall design company Enclos knew they could trust DOWSIL™ silicone structural sealants for the challenging façade design.

With Dow's comprehensive building technologies – and specifically a wide array of demonstrated-successful structural silicone sealants, including DOWSIL™ 121 Structural Glazing Sealant, DOWSIL™ 983 Structural Glazing Sealant and DOWSIL™ 795 Silicone Building Sealant – Enclos was able to select each product type depending on the specific application.

“We let them know that Dow would be with them every step of the way. Our team did whatever it took to address the project needs.” – Dow Senior Account Manager Anthony Torreano

## Collaborating for success

With more than 70 years of construction industry experience, Dow understands that building requires a team approach. Taking a system-based, whole-enclosure performance approach, Dow enables design, durability, performance and sustainability – all supported by a high-quality team that is engaged and knowledgeable. For the Chase Center development, the trusted silicone technology and experience from Dow not only helped address the accelerated schedule, but it also helped contribute to an even greater goal of potentially achieving LEED® Gold certification.

## For more information

Learn more about Dow's full range of high-performance building products, services and support at [dow.com/buildingscience](https://dow.com/buildingscience).

Dow has sales offices, manufacturing sites, and science and technology laboratories around the globe. Find local contact information at [dow.com/contactus](https://dow.com/contactus).



**Dow Building Science website:**  
[dow.com/buildingscience](https://dow.com/buildingscience)



**Contact Dow Building Science:**  
[dow.com/customersupport](https://dow.com/customersupport)



**Visit us on Twitter**  
[@DowHPBuilding](https://twitter.com/DowHPBuilding)



**Visit us on LinkedIn**  
[Dow High Performance Building](https://www.linkedin.com/company/dow-high-performance-building)

Images: Cover – dow\_ 72836975857; Page 2 – dow\_ 72836972664, dow\_ 72836971439, dow\_ 72836974746; Page 3 – dow\_ 72836972314.

PRODUCT SAFETY INFORMATION REQUIRED FOR SAFE USE IS NOT INCLUDED IN THIS DOCUMENT. BEFORE HANDLING, READ PRODUCT AND SAFETY DATA SHEETS AND CONTAINER LABELS FOR SAFE USE, PHYSICAL AND HEALTH HAZARD INFORMATION. THE SAFETY DATA SHEET IS AVAILABLE ON THE DOW WEBSITE AT [WWW.DOW.COM](http://WWW.DOW.COM), OR FROM YOUR DOW SALES APPLICATION ENGINEER, OR DISTRIBUTOR, OR BY CALLING DOW CUSTOMER SERVICE.

NOTICE: No freedom from infringement of any patent owned by Dow or others is to be inferred. Because use conditions and applicable laws may differ from one location to another and may change with time, Customer is responsible for determining whether products and the information in this document are appropriate for Customer's use and for ensuring that Customer's workplace and disposal practices are in compliance with applicable laws and other government enactments. The product shown in this literature may not be available for sale and/or available in all geographies where Dow is represented. The claims made may not have been approved for use in all countries. Dow assumes no obligation or liability for the information in this document. References to "Dow" or the "Company" mean the Dow legal entity selling the products to Customer unless otherwise expressly noted. NO WARRANTIES ARE GIVEN; ALL IMPLIED WARRANTIES OF MERCHANTABILITY OR FITNESS FOR A PARTICULAR PURPOSE ARE EXPRESSLY EXCLUDED.

®™ Trademark of The Dow Chemical Company ("Dow") or an affiliated company of Dow.

© 2022 The Dow Chemical Company. All rights reserved.

#16599

Form No. 63-7038-01-0721 AGP