

DOWSIL™ ALLGUARD

Silicone Elastomeric Coating

Color selection guide



When building coatings fail, leaks can result ... unless your building is protected by a product that can handle the elements – a product like DOWSIL™ ALLGUARD Silicone Elastomeric Coating.

An advanced, water-based silicone coating that actually seals out water from the above-grade masonry exterior of a building, DOWSIL™ ALLGUARD Silicone Elastomeric Coating offers waterproof protection and long-term durability in a smooth, attractive, matte finish that hides roller marks. And it's available in a broad spectrum of standard and custom colors to expand your design options.

Enhanced weatherproofing protection

An excellent choice for both new construction and renovation projects, DOWSIL™ ALLGUARD Silicone Elastomeric Coating is a one-part silicone elastomer that can withstand hurricane-force, wind-driven rain without water penetration. It cures to a lightweight, flexible membrane that can bridge hairline cracks up to 1/16" and handle the normal movement imposed by seasonal expansion-contraction. While it seals out rain, it still allows moisture vapor to migrate from inside the substrate, minimizing blistering and delamination.

Broad application

DOWSIL™ ALLGUARD Silicone Elastomeric Coating is excellent for protecting and enhancing many substrates, including masonry, poured and precast concrete, fluted block, brick, stucco, synthetic stucco, exterior insulation finish system (EIFS) panels and previously coated masonry surfaces. It also adheres to DOWSIL™ 123 Silicone Seal, DOWSIL™ 756 SM Building Sealant, DOWSIL™ 790 Silicone Building Sealant, DOWSIL™ 791 Silicone Weatherproofing Sealant and DOWSIL™ 795 Silicone Building Sealant.

Primerless performance⁽¹⁾

Provided prior field adhesion testing is completed, DOWSIL™ ALLGUARD Silicone Elastomeric Coating can be applied without a primer, saving valuable time and expense. Primerless applications will still qualify for the full warranty. DOWSIL™ ALLGUARD Primer may be required for some substrates.

Versatile and easy to apply

When used in conjunction with DOWSIL™ 123 Silicone Seal and DOWSIL™ Brand Silicone Sealants, DOWSIL™ ALLGUARD Silicone Elastomeric Coating becomes part of a distinctive weatherproofing repair system, an exceptional choice for restoring EIFS panel systems with failed caulk joints. See Dow's EIFS Restoration Manual (Form No. 62-510) for complete EIFS repair information.

The one-part elastomer coating can be easily applied with a roller, power roller, brush or spray. And it addresses current federal guidelines for Volatile Organic Compounds (VOCs) for architectural coatings, testing well below 200 grams/liter (EPA Test Method 24 [40 CFR 60, Appendix A]).

Reliable silicone durability

Because it is a silicone, DOWSIL™ ALLGUARD Silicone Elastomeric Coating remains elastic after years of sunlight, ozone, rain, snow and temperature extremes. It protects against cracking, chalking, peeling and blistering. On commercial applications, DOWSIL™ ALLGUARD Silicone Elastomeric Coating is backed by an initial 10-year waterproofing performance limited warranty that can be extended for an additional 10 years via a recoat option. That's up to 20 years of guaranteed protection.

More than 55 standard colors, plus custom color capabilities

DOWSIL™ ALLGUARD Silicone Elastomeric Coating is available in 55 standard colors and a full range of custom colors to address your design needs. For your convenience, DOWSIL™ ALLGUARD Silicone Elastomeric Coating is pigmented at your Dow distributor for rapid delivery, typically only one day.

Custom colors can be matched to substrate samples, paint numbers from major paint suppliers, or color swatches. For more information on Dow's custom color capabilities, visit us online at dow.com/allguard.

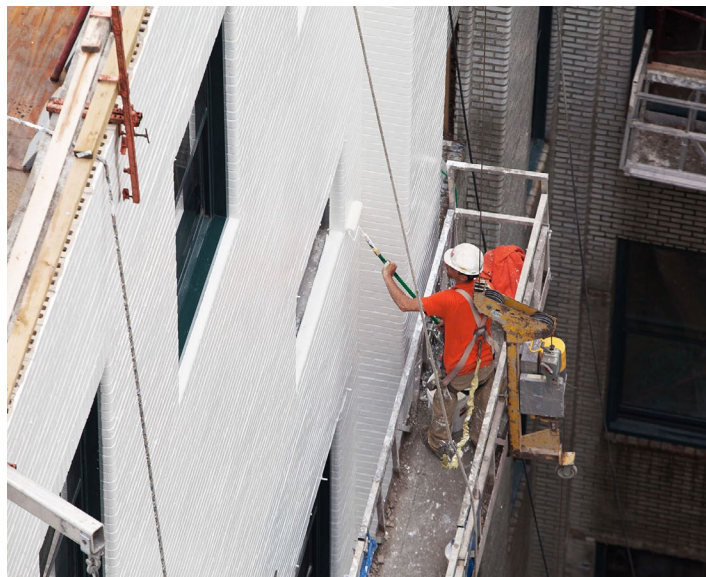
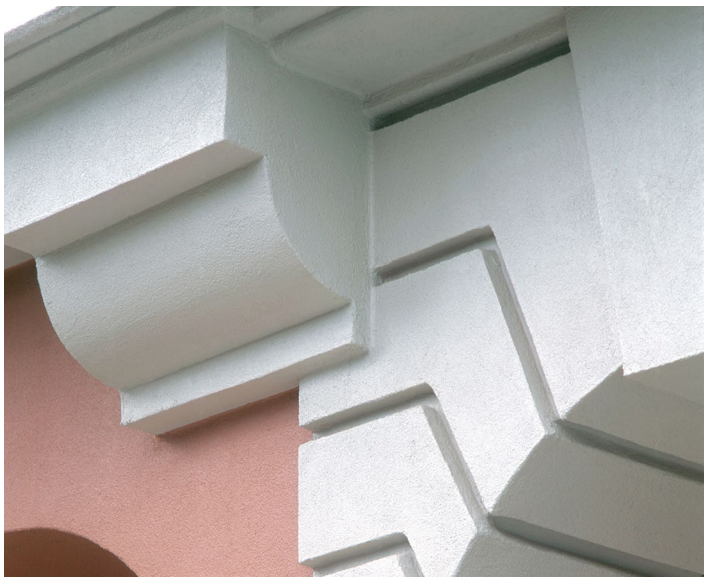
Color swatches

- Please check the availability of the different colors
- Please refer to product literature for application and technical information

The colors shown are a close approximation of the actual sealant colors. However, for best results, submit color samples or swatches to our lab for color testing and matching.

⁽¹⁾In most instances

					
Adobe Brown	Beige	Cream	Bone White	Egg Shell	Misty White
					
Georgia Clay	Dusty Rose	Nutmeg	Brazil Nut	Raspberry Ice	Shark's Belly
					
Canyon Sand	Sand	Earth	Cocoa	Antique Linen	Rose Oak
					
Burlap	Toasted Coconut	Dark Hazel	Khaki	Stucco	Queen Anne's Lace
					
Light Olive	Dark Olive	Corinthian	Grindstone	Willow Gray	Cement
					
Battleship Gray	Slate	Petoskey	Whole Wheat	Macrame	Straw
					
Buttercup	Sandstone	Caramel Corn	Boston Baked	Cinnamon Spice	Winter Gray
					
Arctic	Glacier	Caribbean	Stormy	Sapphire	Cumulous
					
Seafoam	Cypress	Creme de Mint	Tortoise	Spruce	Evergreen
	<p>Dow will support and manufacture certain colors of DOWSIL™ ALLGUARD Silicone Elastomeric Coating that contain a specific blue pigment, however, we are not actively promoting these colors or seeking orders for them. Consequently, blue and green standard or custom colors containing this specific blue pigment will be available only in quantity lots of 500 gallons or more. Smaller quantities may be available, but additional costs would be added to the price. Check with your local authorized Dow Distributor.</p>				
Granite					



SWRI validation



The performance of DOWSIL™ ALLGUARD Silicone Elastomeric Coating is validated by the Sealant, Waterproofing and Restoration Institute (SWRI), an independent professional organization comprised of leading commercial contractors, manufacturers and consultants.

Long-lasting silicone protection

For building protection that's always on guard, trust DOWSIL™ ALLGUARD Silicone Elastomeric Coating. It's the protection you'd expect from Dow, a world leader in silicones and silicone technology.

Learn more

Learn more about the full range of Dow Building Science offerings, including products, service and support, at **dow.com/buildingscience**.


Dow has sales offices, manufacturing sites, and science and technology laboratories around the globe. Find local contact information at **dow.com/contactus**.



Dow Building Science website:
dow.com/buildingscience



Contact Dow Building & Infrastructure:
dow.com/customersupport

 **Visit us on X (formerly Twitter)**
[@DowBScience](https://twitter.com/DowBScience)

 **Visit us on LinkedIn**
[Dow Building Science](https://www.linkedin.com/company/dow-building-science)

Images: Cover — dow_63140623722, dow_49211767708; page 4 — dow_40355848634, dow_40680908896

Dow has not performed architectural, engineering or other professional services in connection with any of the projects referenced herein, and Dow assumes no responsibility for any design, specifications, windload requirements, materials, samples, design elements, or testing of any design components, including the adequacy or completeness of the same, supplied or used by any party. Dow will only warrant products as set forth in a separate executed Dow warranty.

PRODUCT SAFETY INFORMATION REQUIRED FOR SAFE USE IS NOT INCLUDED IN THIS DOCUMENT. BEFORE HANDLING, READ PRODUCT AND SAFETY DATA SHEETS AND CONTAINER LABELS FOR SAFE USE, PHYSICAL AND HEALTH HAZARD INFORMATION. THE SAFETY DATA SHEET IS AVAILABLE ON THE DOW WEBSITE AT [WWW.DOW.COM](https://www.dow.com), OR FROM YOUR DOW SALES APPLICATION ENGINEER, OR DISTRIBUTOR, OR BY CALLING DOW CUSTOMER SERVICE.

NOTICE: No freedom from infringement of any patent owned by Dow or others is to be inferred. Because use conditions and applicable laws may differ from one location to another and may change with time, Customer is responsible for determining whether products and the information in this document are appropriate for Customer's use and for ensuring that Customer's workplace and disposal practices are in compliance with applicable laws and other government enactments. The product shown in this literature may not be available for sale and/or available in all geographies where Dow is represented. The claims made may not have been approved for use in all countries. Dow assumes no obligation or liability for the information in this document. References to "Dow" or the "Company" mean the Dow legal entity selling the products to Customer unless otherwise expressly noted. NO WARRANTIES ARE GIVEN; ALL IMPLIED WARRANTIES OF MERCHANTABILITY OR FITNESS FOR A PARTICULAR PURPOSE ARE EXPRESSLY EXCLUDED.

®™ Trademark of The Dow Chemical Company ("Dow") or an affiliated company of Dow.

© 2019-2024 The Dow Chemical Company. All rights reserved.

#17477

Form No. 62-769-01-0624A AGP