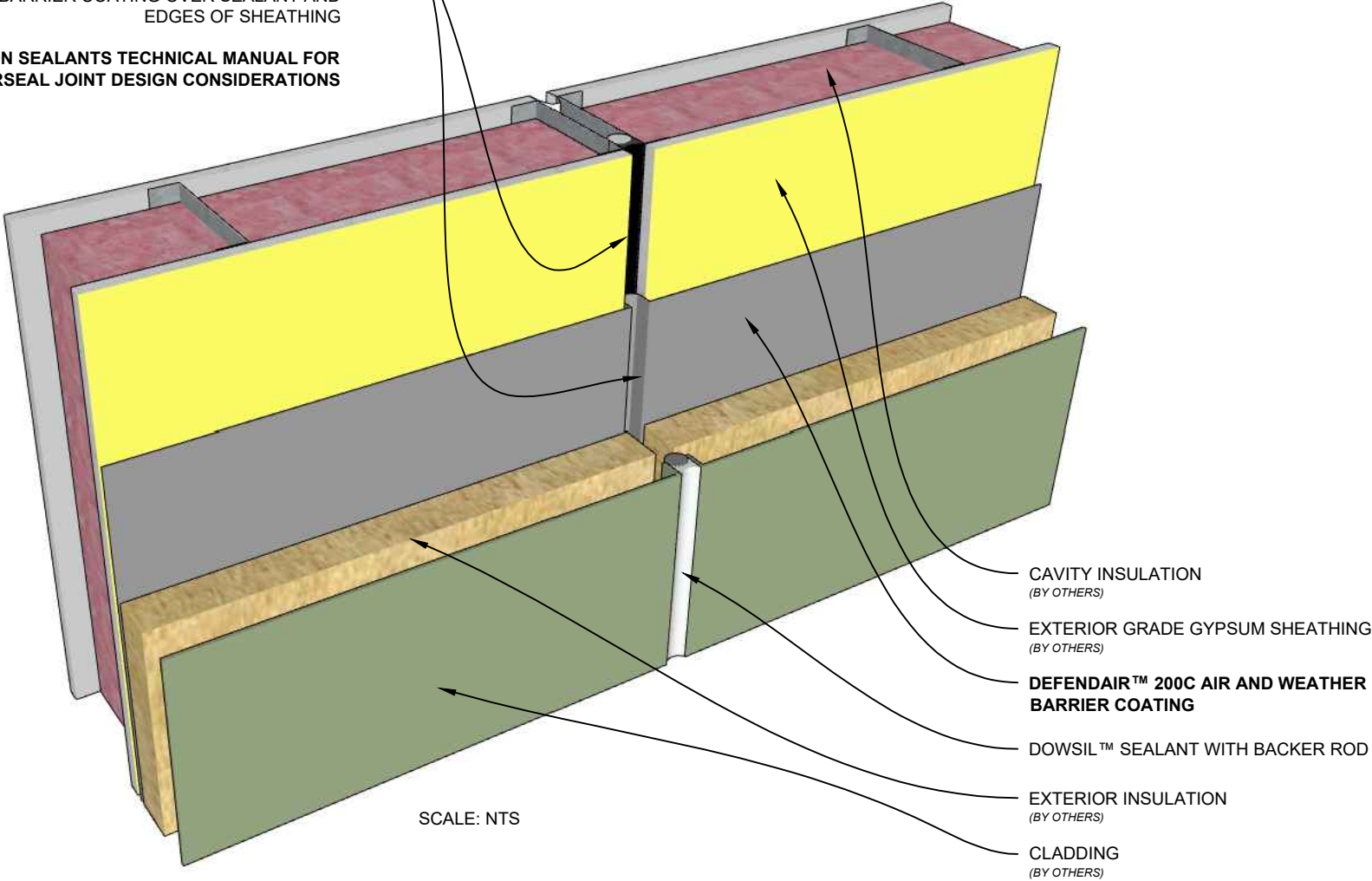


DOWSIL™ 791 SILICONE WEATHERPROOFING SEALANT WITH BACKER ROD, SET SEALANT BACK TO ACHIEVE SUFFICIENT BITE ONTO SOUND SUBSTRATES, OVERLAP CUT SHEATHING EDGES WITH SEALANT APPROXIMATELY 1/8", APPLY DEFENDAIR™ 200C AIR AND WEATHER BARRIER COATING OVER SEALANT AND EDGES OF SHEATHING

REFER TO DOW CONSTRUCTION SEALANTS TECHNICAL MANUAL FOR MOVING WEATHERSEAL JOINT DESIGN CONSIDERATIONS



USERS OF THIS DESIGN DETAIL OR ILLUSTRATION ACKNOWLEDGE AND AGREE THAT DOW IS NOT PROVIDING ARCHITECTURAL, ENGINEERING OR OTHER PROFESSIONAL SERVICES, AND DOW ASSUMES NO RESPONSIBILITY FOR, AND USERS OF THIS DESIGN DETAIL OR ILLUSTRATION ARE NOT RELYING ON DOW FOR, ANY DESIGN, SPECIFICATIONS, WINDLOAD REQUIREMENTS, MATERIALS, SAMPLES, DESIGN ELEMENTS, OR TESTING OF ANY DESIGN COMPONENTS, INCLUDING THE ADEQUACY OR COMPLETENESS OF THE SAME, SUPPLIED OR USED BY ANY WARRANTY RECIPIENTS OR USERS OF DOW PRODUCTS OR SERVICES. DOW WILL ONLY WARRANT PRODUCTS AS SET FORTH IN A SEPARATE EXECUTED DOW WARRANTY. THIS DESIGN DETAIL OR ILLUSTRATION AND ANY COMMENTS, AND MARK-UPS TO THE DESIGN DETAIL OR ILLUSTRATION, ARE PROVIDED TO SUGGEST HOW DOW PRODUCTS MAY BE INCORPORATED INTO A PROJECT. DESIGN DECISIONS ARE THE RESPONSIBILITY OF THE DESIGNER OF RECORD.

61-8155-01-0224



DOWSIL™ AIR AND WEATHER BARRIER SYSTEM
EXPANSION OR CONTROL JOINT - METHOD A

DRAWING NO.	FW-2A 3D
DATE	03/08/2024