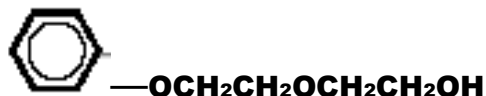




Diethylene Glycol Phenyl Ether, Technical Grade



Introduction

Contains 20 - 30% Ethylene glycol monophenyl ether

Diethylene Glycol Phenyl Ether Technical Grade is a high boiling, aromatic glycol ether. It has excellent solvency properties due to the alcohol and ether functionality. It is versatile in coating applications and is effective as a coalescent. Diethylene Glycol Phenyl Ether is also used as a chemical intermediate. .

Physical properties†

Molecular weight (g/mol)		
Diethylene glycol monophenyl ether (70 – 80%)		182.2
Ethylene glycol monophenyl ether (20 – 30%)		138.2
Hydroxyl number (average, mg/g)		335
Boiling point @ 760 mmHg, 1.01 bar		
	509°F	265°C
Flash point (SetaFlash Closed Cup)		
	280°F	138°C
Vapor pressure (mmHg @ 25°C)		
		<0.002
Specific gravity (25/25°C)		
		1.112
Relative Evaporation Rate (n-Butyl acetate =1)		
		0.0002
Freezing Point		
	< -13 °F	< -25°C
Density @ 20°C		
	9.29 lb/gal	1.113 g/cm ³
@ 25°C		
	9.26 lb/gal	1.109 g/cm ³
Viscosity (cP or mPa·s @ 25°C)		
		30
Solubility (weight percent @ 25°C)		
Solvent in water		4.0
Water in solvent		22.0
Hansen solubility parameters (J/cm ³) ^{1/2}		
_d (Dispersion)		16.4
_p (Polar)		6.7
_h (Hydrogen bonding)		11.6

†The physical property data listed here are considered to be typical properties, not specifications.

Classification/Registry Numbers††

CAS Number	104-68-7
AICS (Australia)	104-68-7
DSL (Canada)	104-68-7
IECSC (China)	104-68-7
ECL (Korea)	104-68-7
EINECS (EU)	203-227-5
New Zealand (NZIoC)	104-68-7
Phillippines (PICCS)	104-68-7
Switzerland (Consolidated Inventory)	104-68-7
ENCS (Japan)	3-563
TSCA (U.S.)	104-68-7

†† **NOTE:** Classifications apply only to this glycol ether product. It is the responsibility of the formulator to ensure that the final finished product complies with the regulations of a given country prior to its sale or distribution in that country.

Suggested Applications

- Latex coalescent in water-based architectural and industrial coatings.
- Solvent for printing inks
- Formulation of stable metalworking fluids
- Coalescent for latex adhesives
- Paint removers
- Chemical Intermediate
- Coalescing ability
- High polymer solvency
- Low evaporation rate
- High boiling point
- High flash point

Features

NOTE: Consult the appropriate Material Safety Data Sheet for safety and handling guidelines for this product.

*The Dow Chemical Company
Midland, Michigan 48674 U.S.A.

In The United States And Canada:
1-800-447-4369
Fax: 1-989-832-1465

In Europe: +800 3 694 6367
Toll Phone: +32 3 450 2240
Toll Fax: +32 3 450 2815

In The Pacific: +800 7776 7776
Fax: +800 7779 7779
In Other Global Areas: 1-989-832-1556
Fax: 1-989-832-1465

Notice: No freedom from any patent owned by Seller or others is to be inferred. Because use conditions and applicable laws may differ from one location to another and may change with time, Customer is responsible for determining whether products and the information in this document are appropriate for Customer's use and for ensuring that Customer's workplace and disposal practices are in compliance with applicable laws and other governmental enactments. Seller assumes no obligation or liability for the information in this document. NO WARRANTIES ARE GIVEN; ALL IMPLIED WARRANTIES OF MERCHANTABILITY OR FITNESS FOR A PARTICULAR PURPOSE ARE EXPRESSLY EXCLUDED.

