



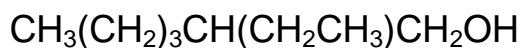
2-Ethylhexanol

2-Ethyl-1-hexanol

2-Ethylhexyl Alcohol

Isooctanol

Octyl Alcohol



Description

A clear, high-boiling point and low volatility solvent with a characteristic odor. It is miscible with most organic solvents but has very limited miscibility with water.

Physical properties

Molecular Weight	130.23
Relative Evaporation Rate nBuAc=1	<0.01
Vapor Pressure at 20°C, mmHg	0.06
Density at 20°C lb/gal	6.94
Specific Gravity at 20/20°C	0.833
Viscosity at 20°C cP	10.3
Surface Tension	
(dynes/cm at 20°C)	26.9
(dynes/cm at 25°C)	-
Hansen Solubility Parameters	
Total	9.9
Non-Polar	7.8
Polar	1.6
Hydrogen Bonding	5.8
Boiling Point, °C at 760mm Hg	184.6
Solubility at 20°C	
%Wt In Water	0.07
%Wt Water in	2.6
Closed Cup Flash Point °F	162
SARA 313 (see note 1 †)	N
Hazardous Air Pollutant (see note 2 † †)	N

† **Note 1:** Superfund Amendments and Reauthorization Act of 1986 (SARA) Title III Section 313

† † **Note 2:** Hazardous Air Pollutants listed under Title III of the Clean Air Act

Classification/Registry Numbers

CAS Number	104-76-7
EINECS	203-234-3

(Please see second page)

2-Ethylhexanol
2-Ethyl-1-hexanol
2-Ethylhexyl Alcohol
Isooctanol
Octyl Alcohol

Features

- Readily forms esters with various acids
- Very limited miscibility with water
- Low volatility solvent
- Enhances flow and gloss in baking finishes
- Non-HAP (Hazardous Air Pollutant) Solvent

Applications

- Manufacture of low volatility esters (for example, dioctylphthalate)
- Low volatility solvent (for resins, animal fats, waxes, vegetable oils and petroleum derivatives)
- Coatings
- Ethoxylates
- Herbicides
- Extractant production (heavy metals)

How supplied

- Bulk
- Tank Truck
- Tank Cars
- Marine Vessels

Note: Consult the appropriate Material Safety Data Sheet for safety and handling guidelines for this product.

The Dow Chemical Company
Danbury, Connecticut 06817 U.S.A.

In the United States and Canada, Product Information: 1-800-447-4369; Fax: 1-989-832-1465; Technical Support: 1-800-SOLVENT
In Europe: +800 3 694 6367; Toll Phone: +32 3 450 2240; Toll Fax: +32 3 450 2815
In the Pacific: +800 7776 7776; Fax: +800 7779 7779
In Other Global Areas: 1-989-832-1556; Fax: 1-989-832-1465

NOTICE: No freedom from any patent owned by Seller or others is to be inferred. Because use conditions and applicable laws may differ from one location to another and may change with time, Customer is responsible for determining whether products and the information in this document are appropriate for Customer's use and for ensuring that Customer's workplace and disposal practices are in compliance with applicable laws and other governmental enactments. Seller assumes no obligation or liability for the information in this document. NO WARRANTIES ARE GIVEN; ALL IMPLIED WARRANTIES OF MERCHANTABILITY OR FITNESS FOR A PARTICULAR PURPOSE ARE EXPRESSLY EXCLUDED.

